



This document and the information contained herein is the property of Saab AB and must not be used, disclosed or altered without Saab AB prior written consent.

Implementation of Antura in Saab

Business Area Surveillance

Elin Birkestad



Agenda

- Presenting Saab
 - The world is changing fast
 - Saab mission
 - Five core areas
 - Business Area Surveillance 2021
- Business Area Surveillance challenge
- Our Choice - Antura
- Developing Saab Antura Standard
- Vision – Project Performance Initiative
- Principal Roll out
- Success factors!



The world is changing fast

- The world is changing rapidly
- Internationalization and globalization have made an impact
- New unexpected dangers are emerging constantly – from terrorism to cyber attacks
- Increasing risks to society, important to protect borders and flows of people and goods
- Threats evolve fast, and can spring from anywhere, even from within our own society



An aerial photograph of a city skyline at dusk. The sky is a deep blue with some clouds. The city is densely packed with buildings, many of which are illuminated with lights. A large body of water is visible in the middle ground. The quote is overlaid in the center of the image.

“We keep people and society safe
by delivering innovative state-of-
the-art solutions worldwide”



**Advanced
Weapon Systems**

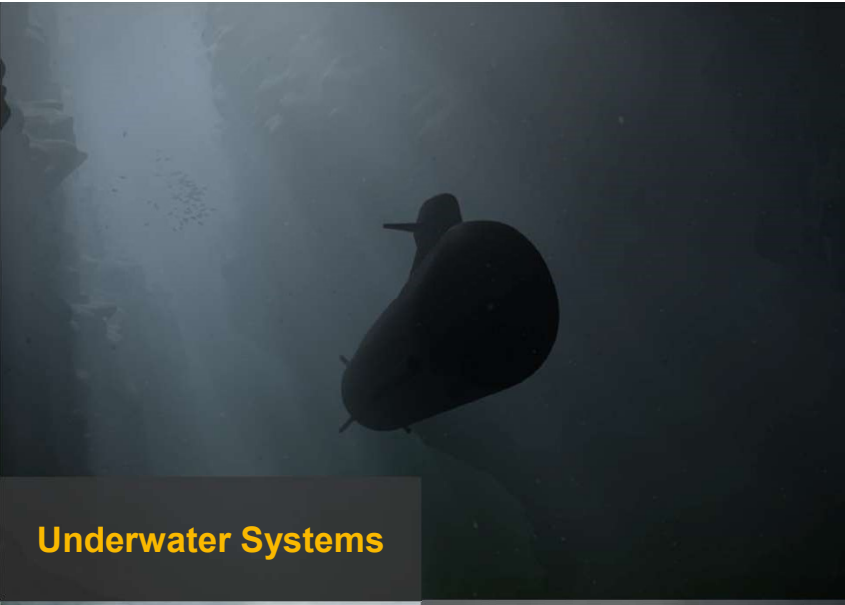
Aeronautics



**Command
and Control**



Underwater Systems



Sensors



Business Area Surveillance 2021

Project Owner

Antura Implementation



Headed by:
Carl-Johan Bergholm

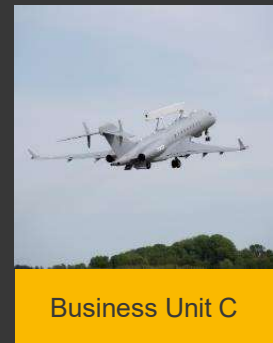
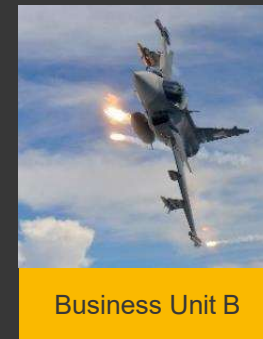
- 4 Business Units
- Locations - Sweden and world wide

No. of employees (FTE)

5 100
(18 200 Saab total)

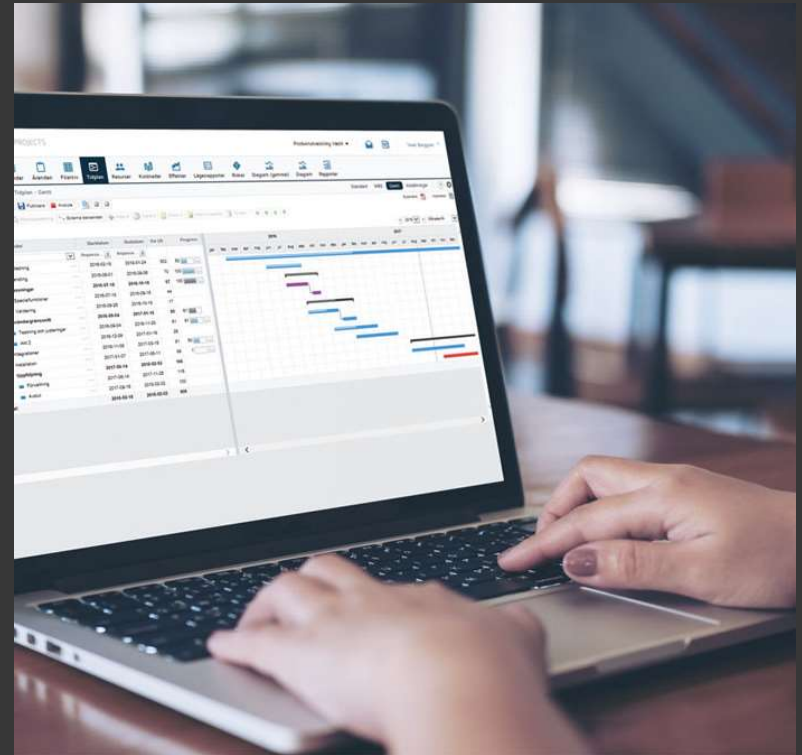
Business Area Surveillance challenge

- Project and business driven operations with three separate Business units (now four)
 - Long project cycles
 - Delegated business responsibility
 - Separate project management tools
 - Separate ways of working
 - Separate cultures and terminology
- Increased need of cooperation between business units
- Need to raise Project Management core competence
- **Task: One common ways of working in one common professional tool!**



Our choice - Antura

- Easy enough for all PMs to be able to raise their levels of project planning and project follow up
- Built to adhere to PMI
- Modularized
- Can integrate to our systems and connect our value streams
- Already implemented at Saab Business Area Aeronautics and at unit Training systems
- Development Saab Antura standard across Saab, first implemented in Surveillance



Developing Saab Antura Standard

- Using our strengths – development of large complex systems
 - System Requirements on tool and ways of working together
 - Making use of product development process
- Combined development team – across several business areas and support functions within Saab together with Antura

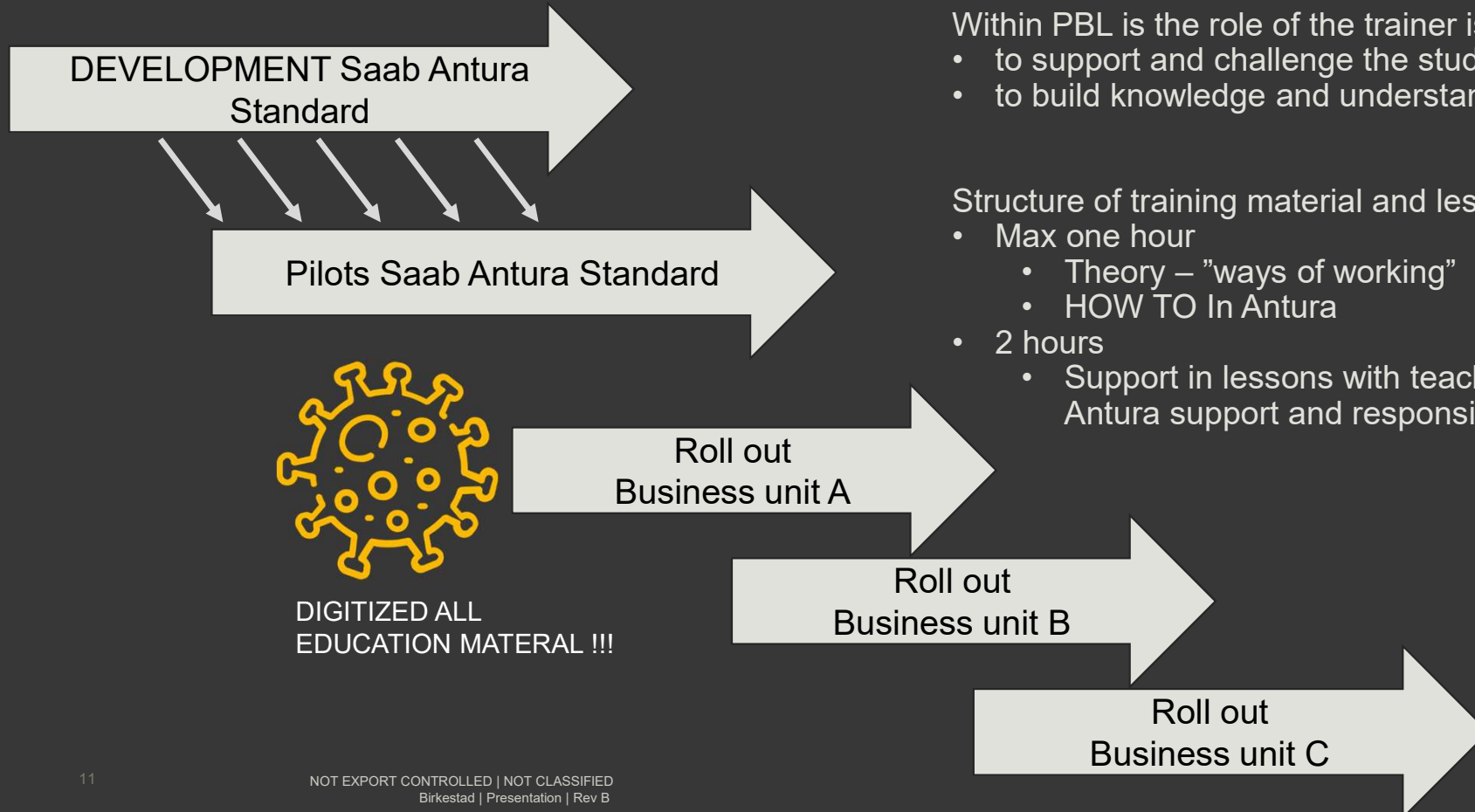


Vision – Project Performance Initiative

- Presenting financials and progress in one-system with consistent and transparent numbers.
 - Driving force for establishing professional common ways of working
 - A clear and transparent plan for each project
 - Visualization of internal and external milestones
 - Early warnings to secure successful project results
 - Having a controlled balance between resource demand and availability



Principal Roll out



Problem base learning – set up

Within PBL is the role of the trainer is:

- to support and challenge the students
- to build knowledge and understand the context

Structure of training material and lessons:

- Max one hour
 - Theory – "ways of working"
 - HOW TO In Antura
- 2 hours
 - Support in lessons with teacher, Super Users Antura support and responsible managers

Success factors!

- The whole unit in together into one common Way of Working and Antura
- Using our strengths – system development and problem based pedagogical approach!
- Ownership at the top!
- Management and Process Owners directly involved to make decisions during implementation
- Roll out is executed as one project in each unit
- Key-persons available from across Business Area
- Participation is mandatory
 - Resources must be allocated in Antura to be available to projects!
 - Quality of RCM analysis sets resolution of operations resource planning!
- Good enough level is important!
- Extremely good support from Antura team!



Thank you!

